



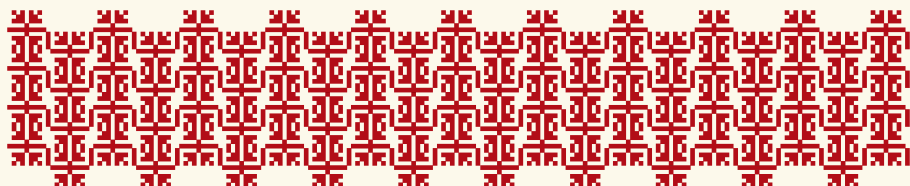
*Hajde tpijme*





# Kafeteria / Cafeteria

|  |      |
|--|------|
| <b>EKSPRES</b><br>(ESPRESSO)                             | 140L |
| <b>EKSPRES MAKIATO</b><br>(ESPRESSO MACCHIATO)           | 170L |
| <b>EKSPRES DOPIO</b><br>(DOPPIO ESPRESSO)                | 240L |
| <b>KORRETO</b><br>(CORRETO)                              | 270L |
| <b>CAFFÈ LATTE</b>                                       | 220L |
| <b>CAFFÈ FREDDO</b>                                      | 240L |
| <b>KAFE DEKAFEINATO</b><br>(DECAFFEINATED COFFEE)        | 160L |
| <b>KAFE TURKE</b><br>(TURKISH COFFEE)                    | 130L |
| <b>MAKIATO DEKAFEINATO</b><br>(DECAFFEINATED MACHCHIATO) | 180L |
| <b>KAPUÇINO ME BUSTINË</b>                               | 250L |
| <b>KAPUÇINO</b><br>(CAPPUCINO)                           | 270L |

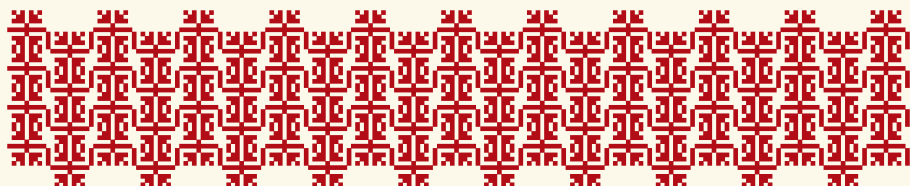




|  |      |
|--|------|
| <b>KAPUÇINO DECAFEINATO</b><br>(DECAFFEINATED CAPPUCINO) | 280L |
| <b>FREDDO CAPPUCINO</b>                                  | 280L |
| <b>FREDDO ESPRESSO</b>                                   | 200L |
| <b>IRISH CAFFEE</b>                                      | 600L |
| <b>HOT CHOCCOLATE</b>                                    | 270L |
| <b>KAKAO</b><br>(CACAO)                                  | 270L |
| <b>SALEP</b>   | 230L |
| <b>QUMËSHT</b><br>(MILK)                                 | 200L |

## **Ujë / Water**

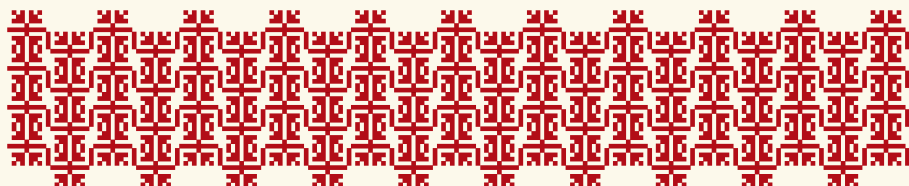
|   |      |
|---|------|
| <b>QAFSHTAMA (0.5l)</b>                                     | 170L |
| <b>QAFSHTAMA (0.75l)</b><br>(SPARKLING/NON SPARKLING WATER) | 250L |





# Çaj Bio / Bio Tea

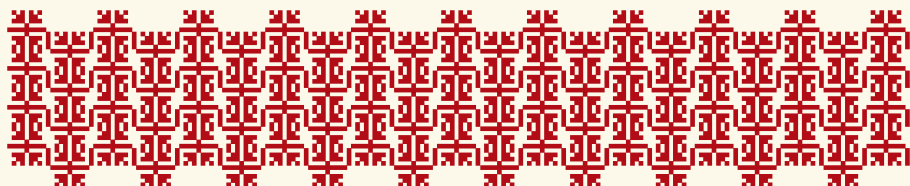
|  |      |
|--|------|
| <b>ÇAJ JESHIL</b><br>(GREEN TEA)             | 220L |
| <b>ÇAJ I ZI</b><br>(BLACK TEA)               | 220L |
| <b>ÇAJ KAMOMILI</b><br>(CHAMOMILE TEA)       | 220L |
| <b>ÇAJ FRUTA PYLLI</b><br>(FRUTTI DI BOSCO)  | 220L |
| <b>ÇAJ TRËNDAFIL I EGËR</b><br>(ROSA CANINA) | 220L |
| <b>ÇAJ AGRUMI</b><br>(MINT & CITRUS)         | 220L |





# Pije freskuese / Refreshing Beverages

|   |      |
|---|------|
| SANTAL                                    | 280L |
| RED BULL                                  | 380L |
| PEPSI / PEPSI MAX / IVI / 7UP             | 200L |
| ORANGE / LEMON SODA                       | 220L |
| LIPTON ICE TEA<br>(PEACH / LEMON / GREEN) | 220L |
| SCHWEPPE                                  | 230L |
| CRODINO                                   | 250L |
| LËNG FRUTASH I FRESKËT                    | 430L |





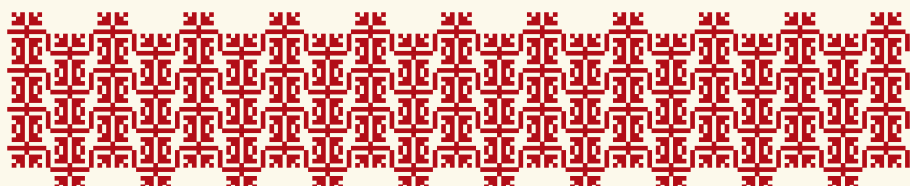
# Birrë / Beer

## BIRRË NË KRIKO / DRAFT BEER

|                 |      |
|-----------------|------|
| TIRANA (0.25l)  | 220L |
| TIRANA (0.5l)   | 390L |
| VELTINS (0.25l) | 270L |
| VELTINS (0.5l)  | 480L |
| PAULANER (0.3l) | 340L |
| PAULANER (0.5l) | 530L |

## BIRRË NË SHISHE / BOTTLED BEER

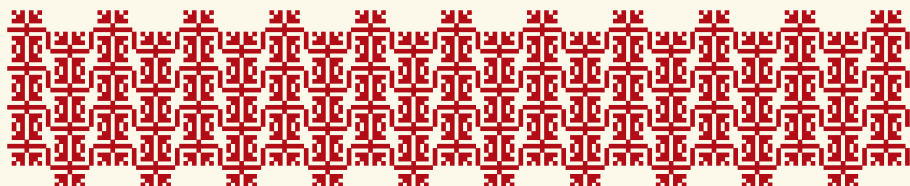
|  |      |
|--|------|
| TIRANA (0.33l)                                 | 280L |
| KORÇA (0.33l)                                  | 280L |
| HEINEKEN (0.33l)                               | 330L |
| PAULANER (0.5l)<br>(HEFE - WEISSBIER, DUNKEL)  | 560L |
| VELTINS (0.33l)<br>(PA ALKOOL / NON ALCOHOLIC) | 330L |





# Një gotë Raki / A taste of Rakia

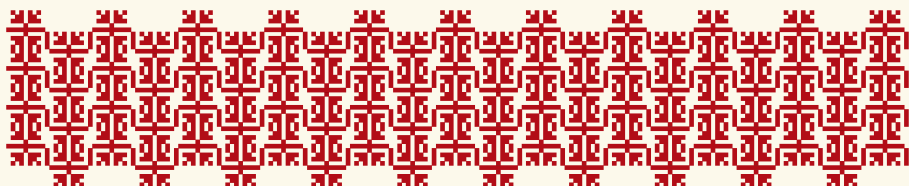
|   |             |
|---|-------------|
| <b>RAKI RRUSHI “PERLA” (50ml)</b><br>(“PERLA” GRAPE RAKI)   | <b>250L</b> |
| <b>RAKI RRUSHI “MOSKAT” (50ml)</b><br>(“MOSKAT” GRAPE RAKI) | <b>200L</b> |
| <b>RAKI RRUSHI (50ml)</b><br>( GRAPE RAKI)                  | <b>200L</b> |
| <b>RAKI KUMBULLE (50ml)</b><br>(PLUM RAKI)                  | <b>220L</b> |
| <b>RAKI MANI (50ml)</b><br>(MULBERRY RAKI)                  | <b>250L</b> |
| <b>RAKI E PJEKUR</b><br>(BAKED RAKI)                        | <b>300L</b> |





# Cocktails

|   |             |
|---|-------------|
| <b>CHERRY AMARETTO</b><br>(DISARONO, CHERRY, LEMON JUICE)                         | <b>700L</b> |
| <b>PASSIONIS</b><br>(GIN, PASSION FRUIT, LEMON JUICE)                             | <b>700L</b> |
| <b>RASPBERRY VODKA LEMONADE</b><br>(VODKA, RASPBERRY, LEMON JUICE)                | <b>650L</b> |
| <b>ORANGE - RUM</b><br>(RUM, LIQUEUR COINTREAU, ORANGE, LEMON JUICE)              | <b>620L</b> |
| <b>PINK MARGARITA</b><br>(TEQUILA, LIQUEUR COINTREAU, STRAWBERRY,<br>LEMON JUICE) | <b>750L</b> |
| <b>WHITE / BLACK RUSSIAN</b>  | <b>600L</b> |
| <b>HENDRICK'S GIN &amp; TONIC</b>   | <b>850L</b> |
| <b>ESPRESSO MARTINI</b>   | <b>550L</b> |
| <b>MOJITO "ERA"</b>   | <b>450L</b> |

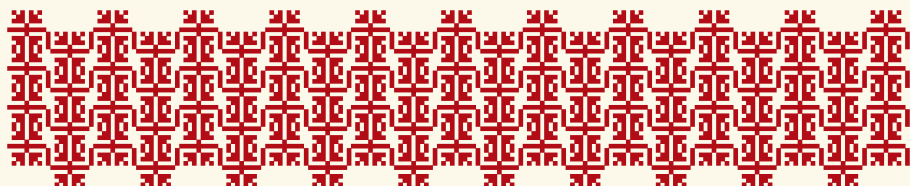






# Apéritif

|   |      |
|---|------|
| <b>BOMBEY</b><br>(BOMBEY, BRITVIC)          | 600L |
| <b>GORDON'S GIN</b><br>(GORDON'S, BRITVIC)  | 550L |
| <b>APEROL</b><br>(APEROL, BRITVIC)          | 600L |
| <b>CAMPARI SPRITZ</b><br>(CAMPARI, BRITVIC) | 600L |
| <b>MARTINI GOLD</b>                         | 550L |
| <b>WHITE/ RED MARTINI</b>                   | 300L |





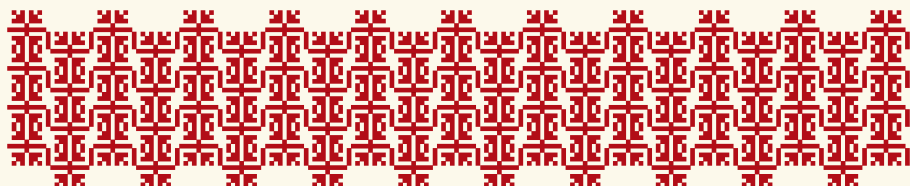
# **Pije Alkoolike / Alcoholic Drinks**


## **COGNAC / BRANDY**

|                                |      |
|--------------------------------|------|
| METAXA 7*                      | 500L |
| COURVOISIER VS                 | 550L |
| MARTELL VS                     | 600L |
| COURVOISIER VSOP               | 850L |
| MARTELL VSOP                   | 850L |
| VECCHIA ROMAGNA CLASSICA/ NERA | 400L |

## **WHISKEY**

|                     |      |
|---------------------|------|
| CUTTY SARK          | 350L |
| DEWAR'S WHITE LABEL | 350L |
| JAMESON             | 350L |
| J & B               | 450L |
| JACK DANIEL'S       | 450L |

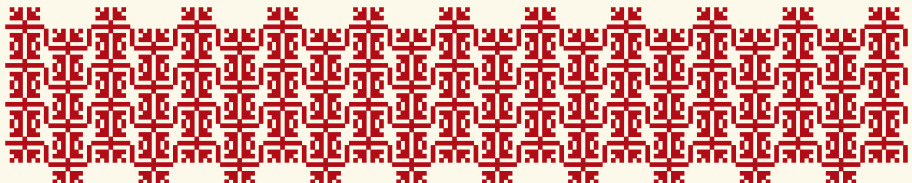




|                             |       |
|-----------------------------|-------|
| JOHNNIE WALKER RED LABEL    | 500L  |
| JACK DANIEL'S SINGLE BARREL | 650L  |
| JOHNNIE WALKER BLACK LABEL  | 650L  |
| DIMPLE                      | 600L  |
| GENTLEMEN JACK              | 650L  |
| CHIVAS REGAL                | 700L  |
| MACALLAN                    | 750L  |
| CARDHU                      | 850L  |
| LAGAVULIN                   | 900L  |
| TALISKER                    | 950L  |
| OBAN 14 YO                  | 1000L |
| LAPHROAIG                   | 1000L |
| JOHNNIE WALKER BLUE LABEL   | 3000L |

## **VODKA**

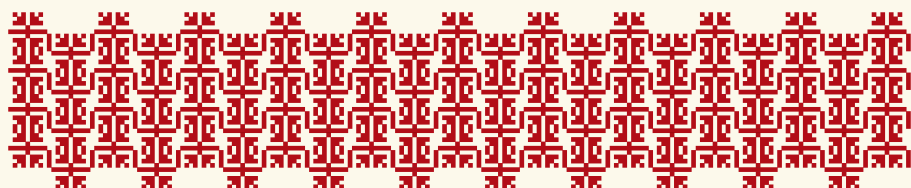
|           |      |
|-----------|------|
| FINLANDIA | 350L |
| SMIRNOF   | 400L |
| ABSOLUT   | 400L |





## LIQUERS

|                     |      |
|---------------------|------|
| AMARO RAMAZZOTTI    | 350L |
| AMARO MONTENEGRO    | 400L |
| AMARO DEL CAPO      | 400L |
| AMARO AVERNA        | 400L |
| AMARO LUCANO        | 400L |
| DISARONNO ORIGINALE | 400L |
| FERNET BRANCA       | 450L |
| UNICUM              | 450L |
| BAILEYS             | 380L |
| KAHLUA              | 400L |
| COINTREAU           | 450L |
| JÄGERMEISTER        | 450L |
| SAMBUCA MOLINARI    | 400L |
| LIMONCELLO          | 370L |
| OUZO PLOMARI        | 300L |





## GIN

|            |      |
|------------|------|
| BEEFEATER  | 350L |
| BOMBAY     | 400L |
| TANQUERAY  | 400L |
| GORDON'S   | 550L |
| HENDRICK'S | 600L |

## RHUM

|                                   |      |
|-----------------------------------|------|
| BACARDI<br>(WHITE / BLACK / GOLD) | 380L |
| CAPTAIN MORGAN                    | 350L |
| HAVANA CLUB ANEJO BLANCO          | 350L |

## TEQUILA

|                      |      |
|----------------------|------|
| JOSE CUERVO ESPECIAL | 380L |
| OLMECA BLANCO        | 450L |
| DON JULIO            | 700L |
| DON JULIO ANEJO      | 950L |

